

Industrial Rubber Hose & Tubing

Watteredge offers a wide selection of rubber hose and tubing for a variety of industry applications. Size options range from 3/8" ID to 40" ID. Available materials include pure gum, SBR rubber, Neoprene, Viton, Chloro Butyl, Hypalon, Nitrile and Silicone. Food and Drug Administration (FDA) food grades are also available.

Features

- Built-in rubber flanges
- Beaded ends
- Built-in stainless steel nipples and flanges
- Enlarged ends and soft cuffs

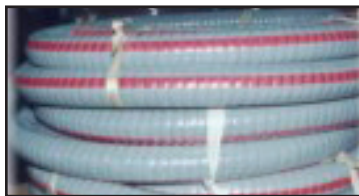
Products

Air & Water Hose



- Watteredge Air
- TC Watteredge Air
- Heavy Duty Water Discharge
- Contractor's Water Discharge
- Heavy Duty Water Suction
- Potable Water Discharge
- Papermill Wash Down Hose
- Hot Water Wash Down Hose

Chemical & Acid Conducting Hose



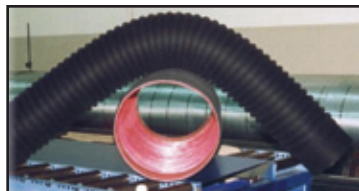
- E. P. D. M.
- Hypalon
- Pure Gum
- Cross Linked Polyethylene
- U. H. M. W. Polyethylene
- Viton
- Chloro Butyl

Marine Hose



- Water Intake (Softwall)
- Water Intake (Hardwall)
- Wet Exhaust (Softwall)
- Wet Exhaust (Hardwall)
- Marine Silicone Coolant

Material Handling



- Drybulk (Softwall) Discharge
- Dredge Sleeves
- Industrial Vacuum Hose
- Material Conducting Hose
- Plaster Hose
- Elephant Trunk Hose
- Sand Suction Hose
- Split Flange Material Conducting
- Gunite Hose
- Sandblast Hose



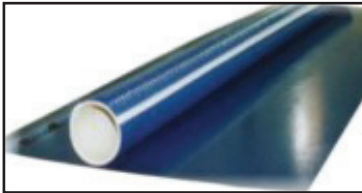
Products (continued)

Specialty Hose



- Fiberglass Steam
- Hot Tar & Asphalt
- Petroleum Discharge
- Drop Hose
- Tankwagon Hose
- Well Pointe Sleeves
- Leaf Collector Hose
- Papermill Suction Box
- Oxygen Lancing Hose
- Epsil Hi Heat Hose
- Vapor Recovery
- Hot Air Blower
- Radiator Hose
- Furnace Door Hose
- Cable Cover Hose

Food Processing



- Flour Suction
- Flour Discharge
- Brewers Suction
- Brewers Discharge
- Milk Suction
- Milk Discharge
- Potable Water Discharge
- Fish Suction Hose
- Food Plant Washdown Hose

Rubber Tubing



- Pure Gum Tubing
- S. B. R. Rubber Tubing
- Neoprene Tubing
- Nitrile Tubing
- Chloro Butyl Tubing
- Hypalon Tubing
- Viton Tubing
- Silicone Tubing
- Food Grade Tubing

How To Order

Please provide the following information:

Inside Diameter _____ Length _____ Wall Thickness _____

Minimum Bend Radius Required _____

Name of Material and % Being Conveyed _____

Designed Working Temperature _____ Quantity _____

Designed Working Pressure (or suction service) _____

End Connection _____ Attachment Method for Application _____

Testing Requirements _____ Packaging Requirements _____

Quality Requirements _____ Delivery Requirements _____

